

FOUNDER

COLLECTION



CRAFTSMAN
(SHOWN WITH OPTIONAL STONE FRONT)

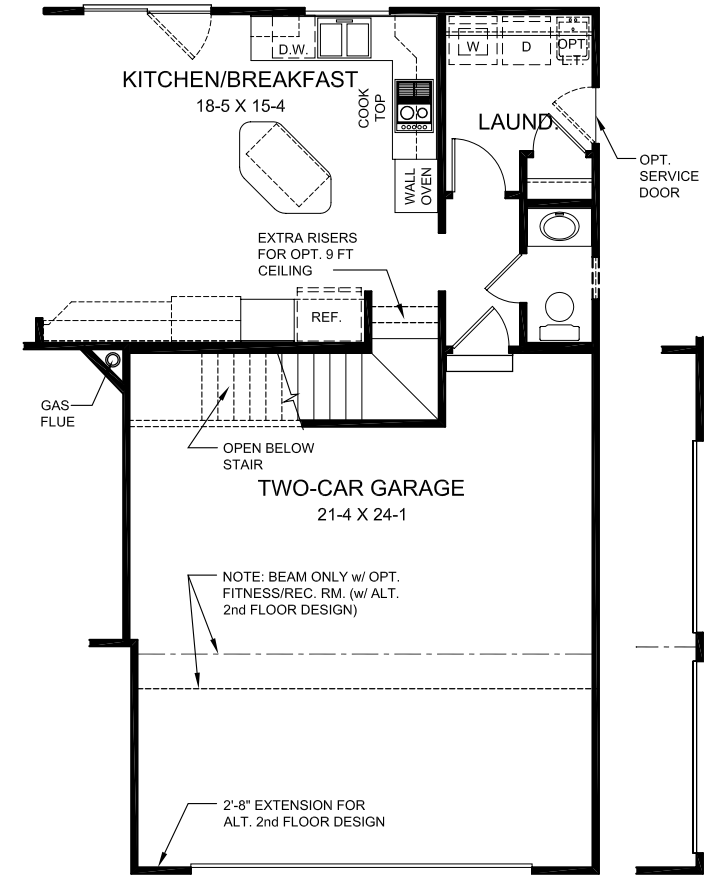
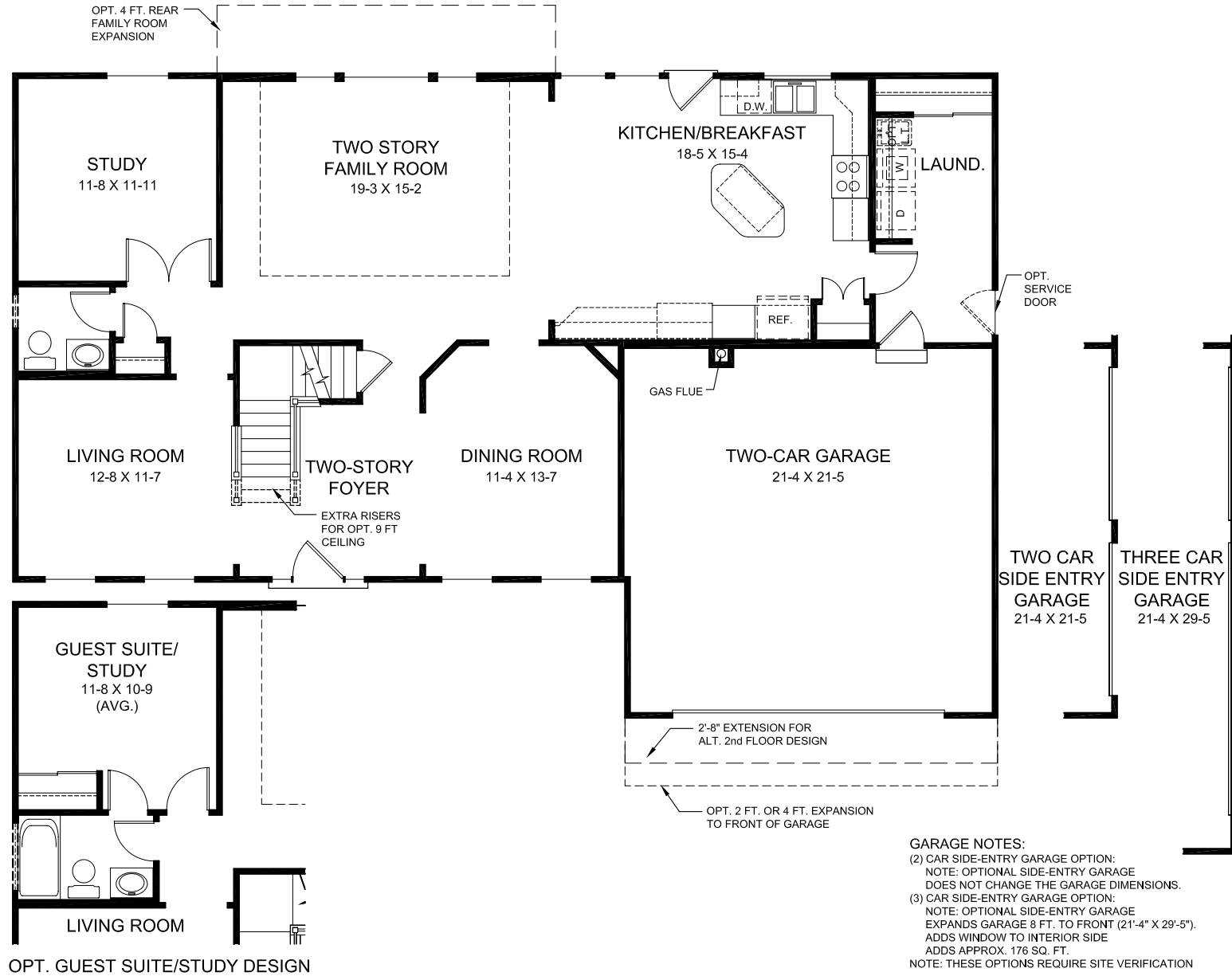
HANCOCK II



A Fischer Group Company

HANCOCK II

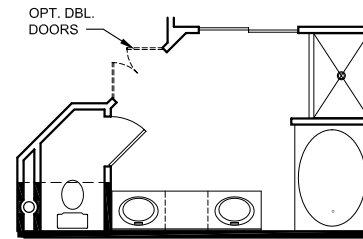
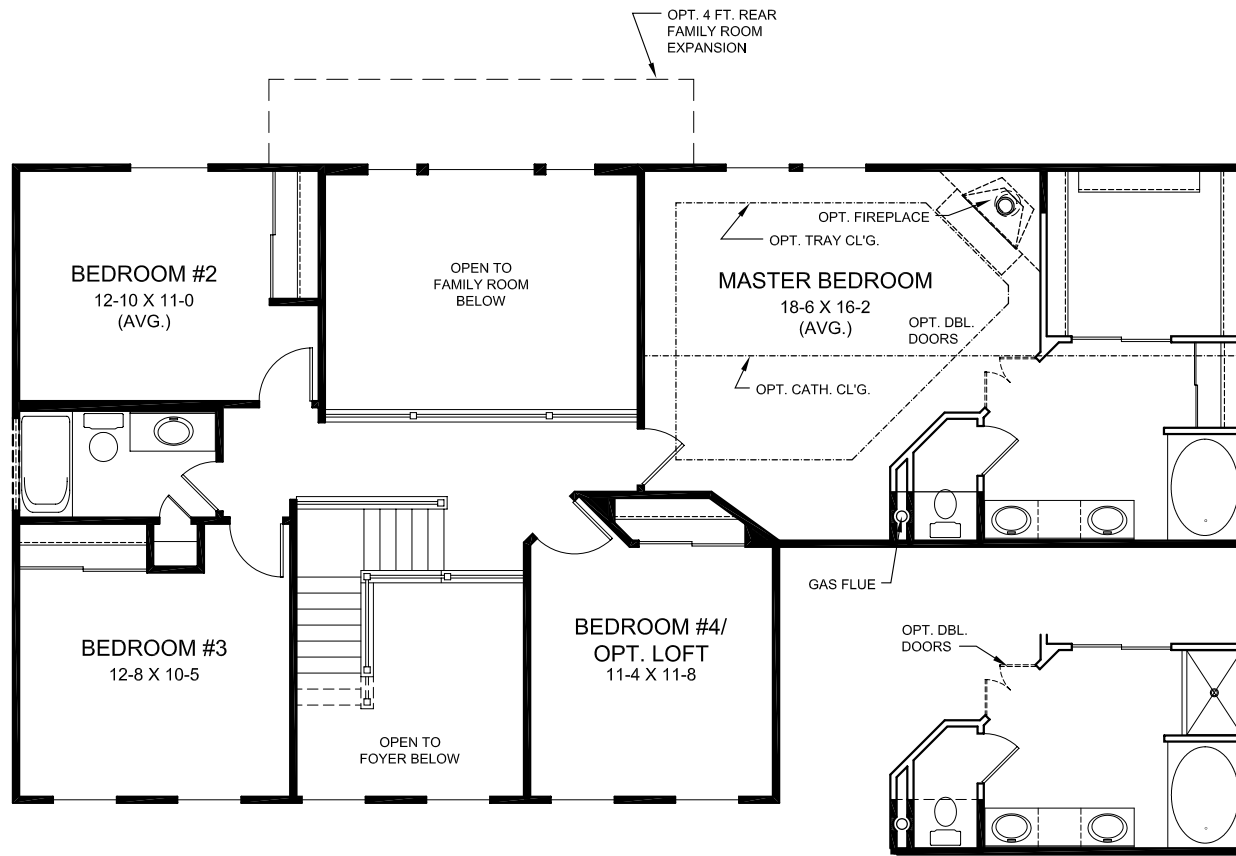
FIRST FLOOR DESIGN



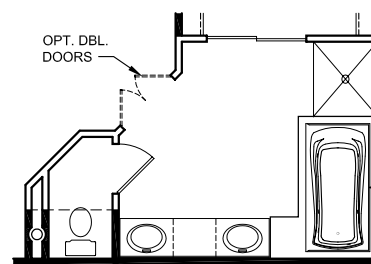
REAR STAIR FOR ALT. SECOND FLOOR DESIGN

SHOWN w/ OPT. BUILT-IN APPLIANCE KITCHEN & OPT. HALF BATH/LAUNDRY ARRANGEMENT.
 NOTE: GARAGE ENLARGES 2FT.-8IN. TO FRONT w/ALT. SECOND FLOOR DESIGN

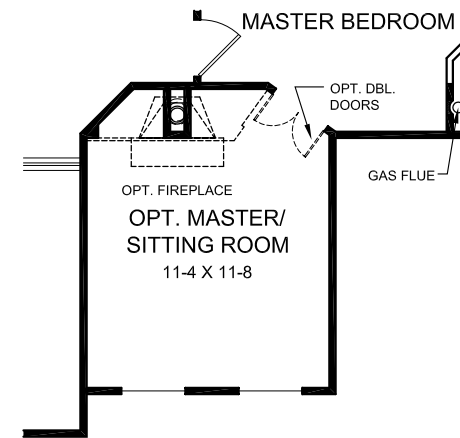
SECOND FLOOR DESIGN



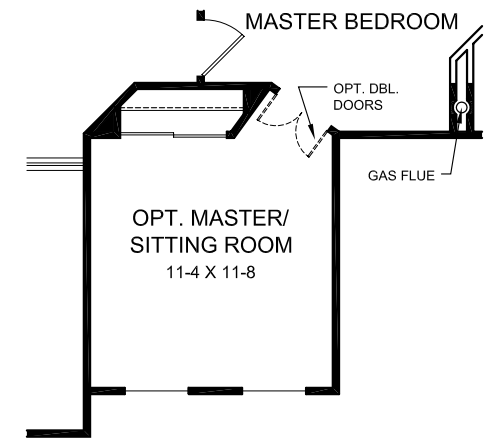
MASTER BATH OPTIONS
W/ OPTIONAL 60 X 42 SOAKING TUB & OPTIONAL 48 X 34 SHOWER (VS INCLUDED SHOWER/ TUB & LINEN CLOSET ARRANGEMENT)



OPT. DESIGNER BATH



OPT. MASTER SITTING ROOM w/ OPT. FIREPLACE



OPT. MASTER SITTING ROOM

ALTERNATE EXTERIOR DESIGNS



FEDERAL REVIVAL
(SHOWN WITH OPTIONAL ENTRY PORCH)



PROVINCIAL



MIDWEST TRADITIONAL



TRADITIONAL

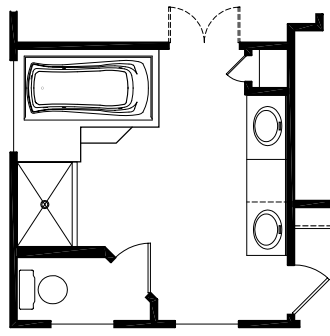


A Fischer Group Company

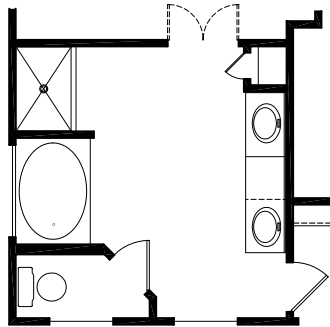
2670 CHANCELLOR DRIVE • SUITE 300
CRESTVIEW HILLS, KY 41017
859.341.4709 fax 859.344.5900

RVSD: 11/07
IM 09/06
Ref. XXXXX

ALTERNATE SECOND FLOOR DESIGNS

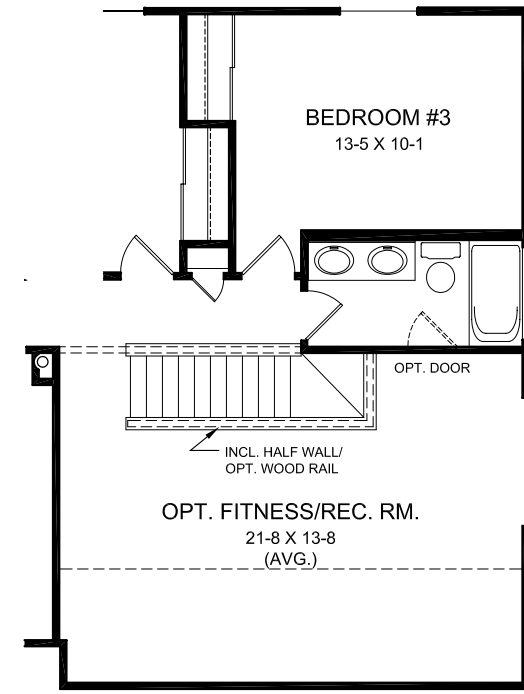
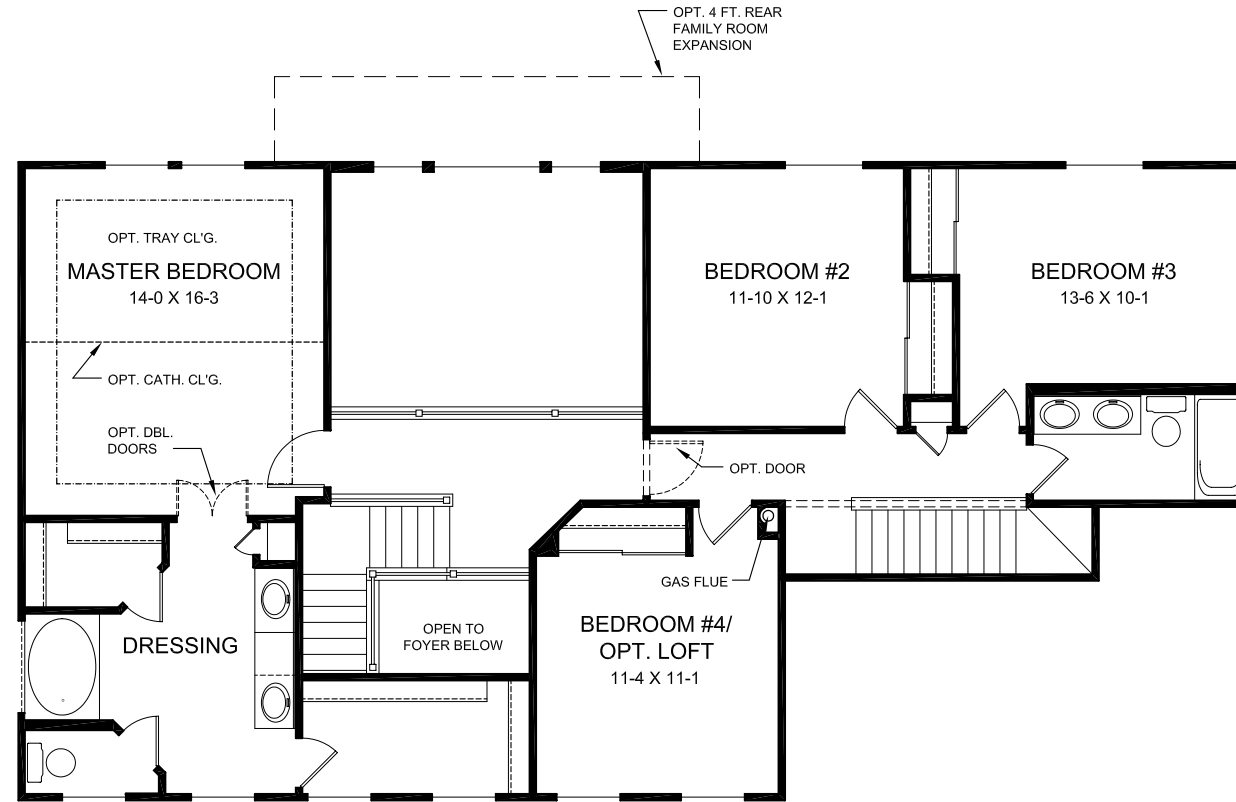


OPT. DESIGNER BATH



MASTER BATH OPTIONS

W/ OPTIONAL 60 X 42 SOAKING TUB
& OPTIONAL 48 X 34 SHOWER
(VS INCLUDED SHOWER/ TUB
& W.I.C. CLOSET ARRANGEMENT)

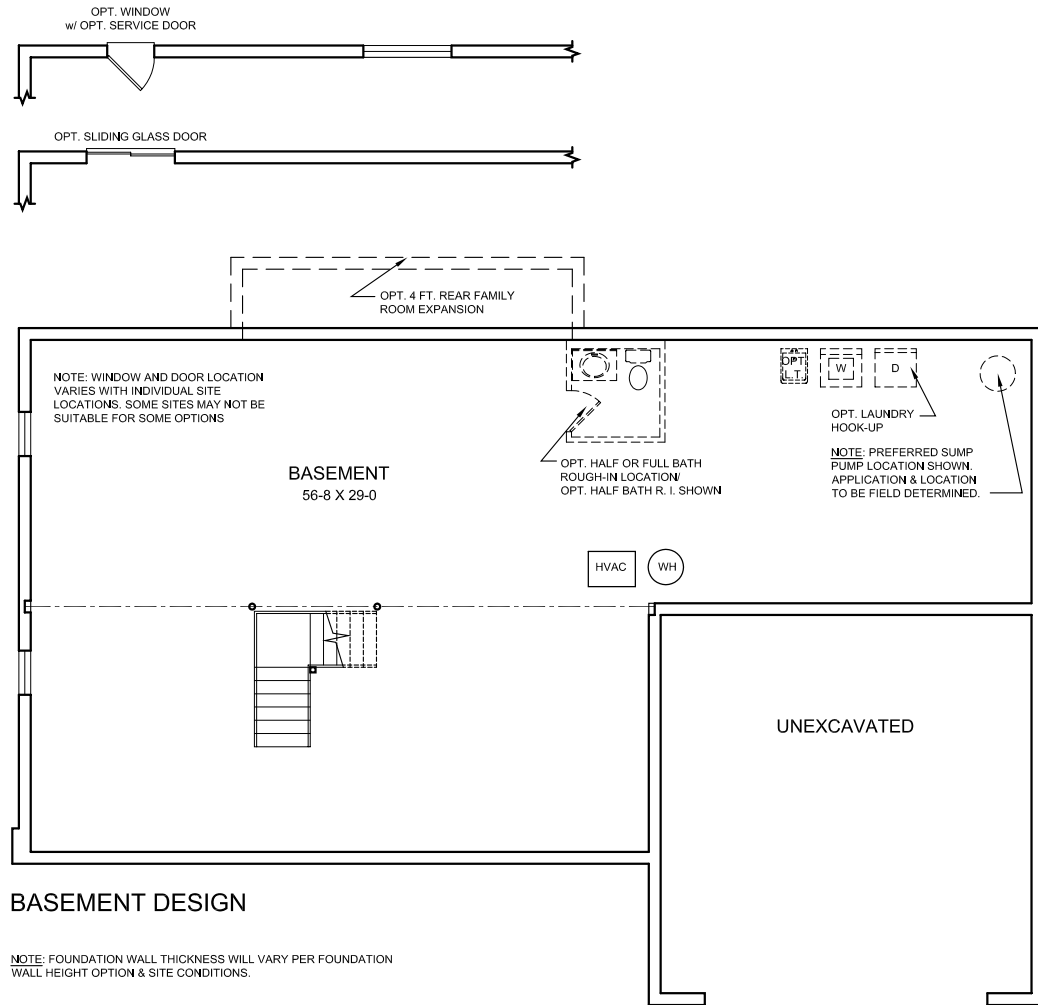


OPT. FITNESS/REC. RM.

Copyright © 1998/2005 Fisher Homes, Inc. Because we are constantly improving our product, we reserve the right to change features, brand names, dimensions, architectural details and designs. This brochure is for illustrative purposes only and not part of a legal contract. Windows, doors, and ceilings may vary on options and elevations selected. Not all features or options are shown. Please ask our sales counselor for complete information.

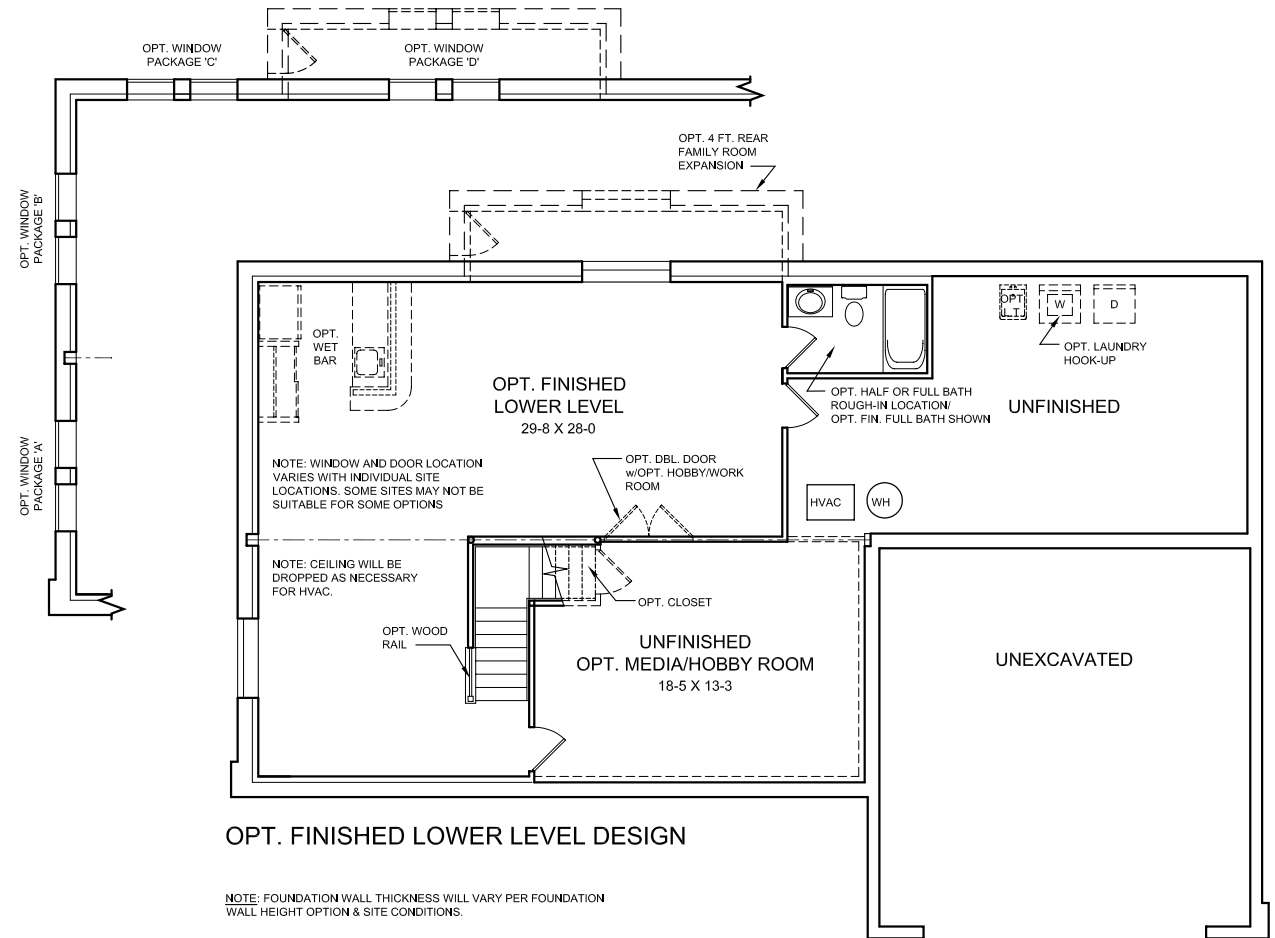


BASEMENT AND LOWER LEVEL DESIGNS



BASEMENT DESIGN

NOTE: FOUNDATION WALL THICKNESS WILL VARY PER FOUNDATION WALL HEIGHT OPTION & SITE CONDITIONS.



OPT. FINISHED LOWER LEVEL DESIGN

NOTE: FOUNDATION WALL THICKNESS WILL VARY PER FOUNDATION WALL HEIGHT OPTION & SITE CONDITIONS.